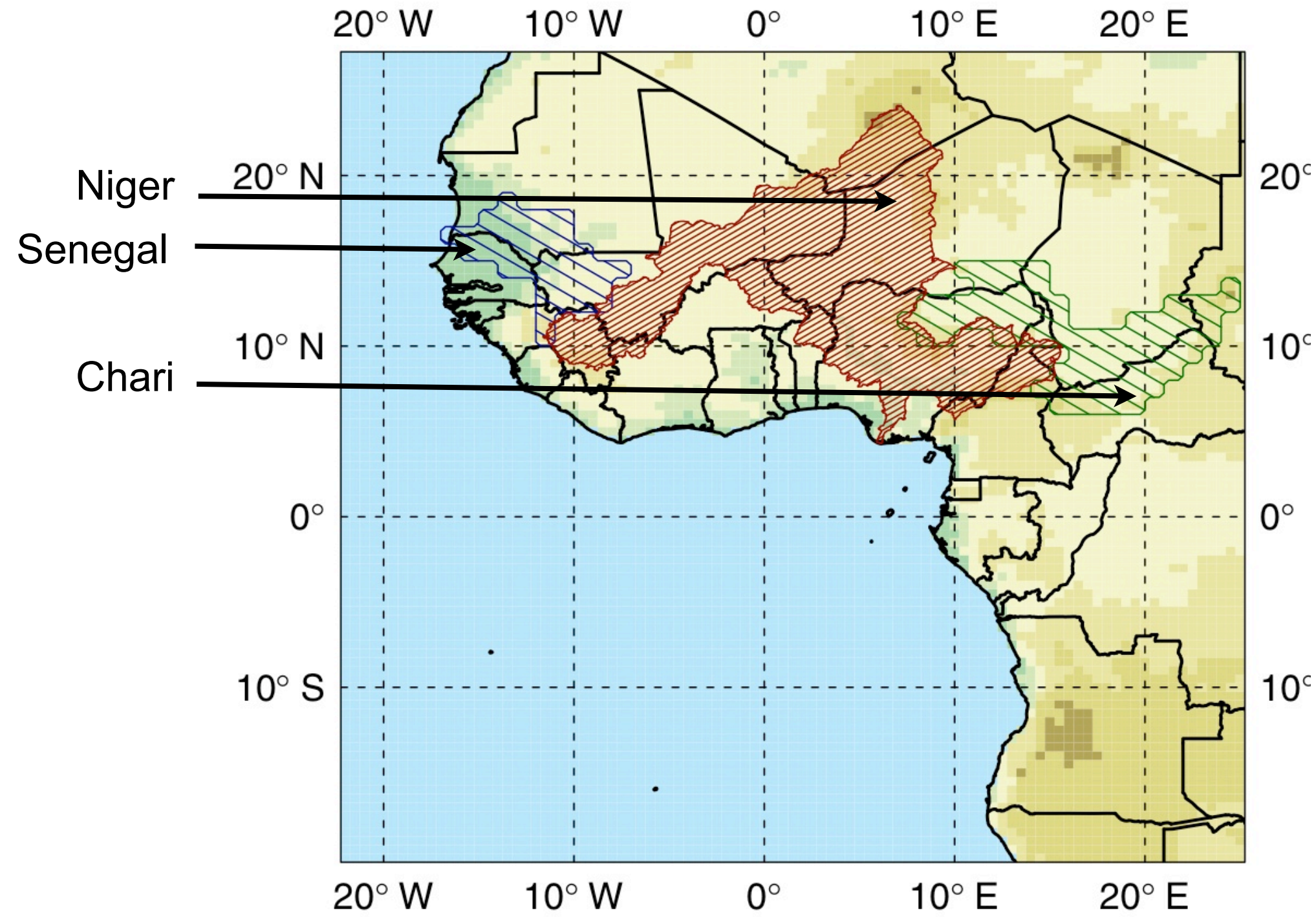
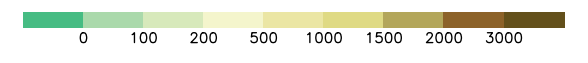
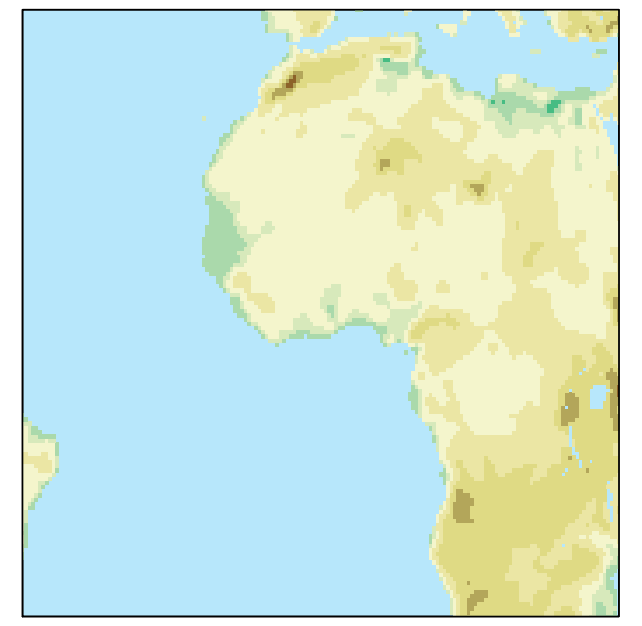


- 1989-2005 (ENSEMBLES)
  - ERA-interim (0.7 degrees) and NCEPI (1.875 degrees) -> CCLM4.6 (0.44 degrees)
- 2000-2004 and 2003/2004 (CEOP / ICTS)
  - NCEPI (1.875 degrees) -> CLM3 / RSM / CRCM / GEMLAM (50 km)
  - BMRC, CPTEC, ECPC, JMA, MSC, NCEP, UKMO („Analyses“)
- Precipitation (GPCC4, Matsuura-Willmots, TRMM)

# Catchments

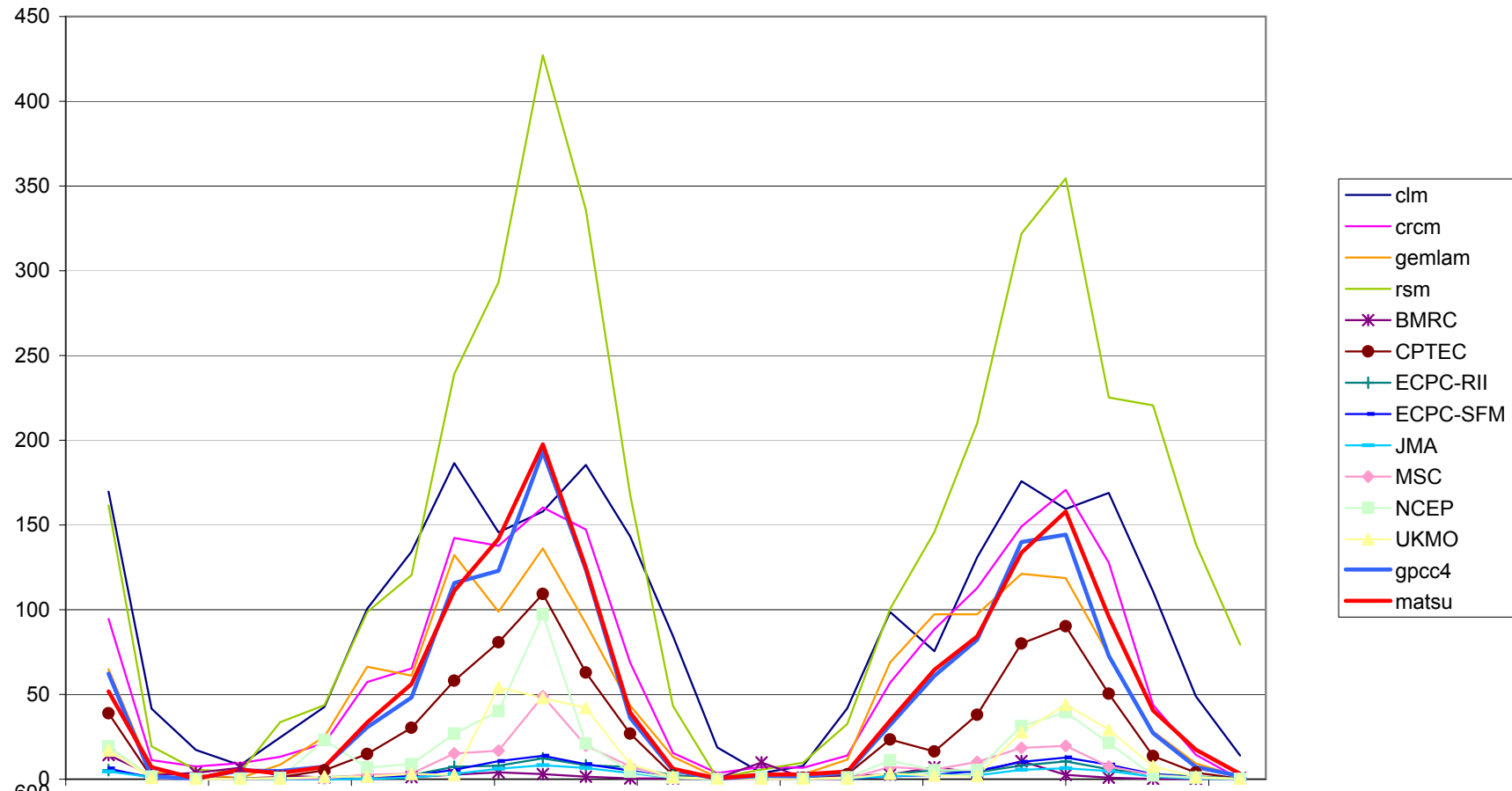


ENSEMBLES  
CCLM-Area

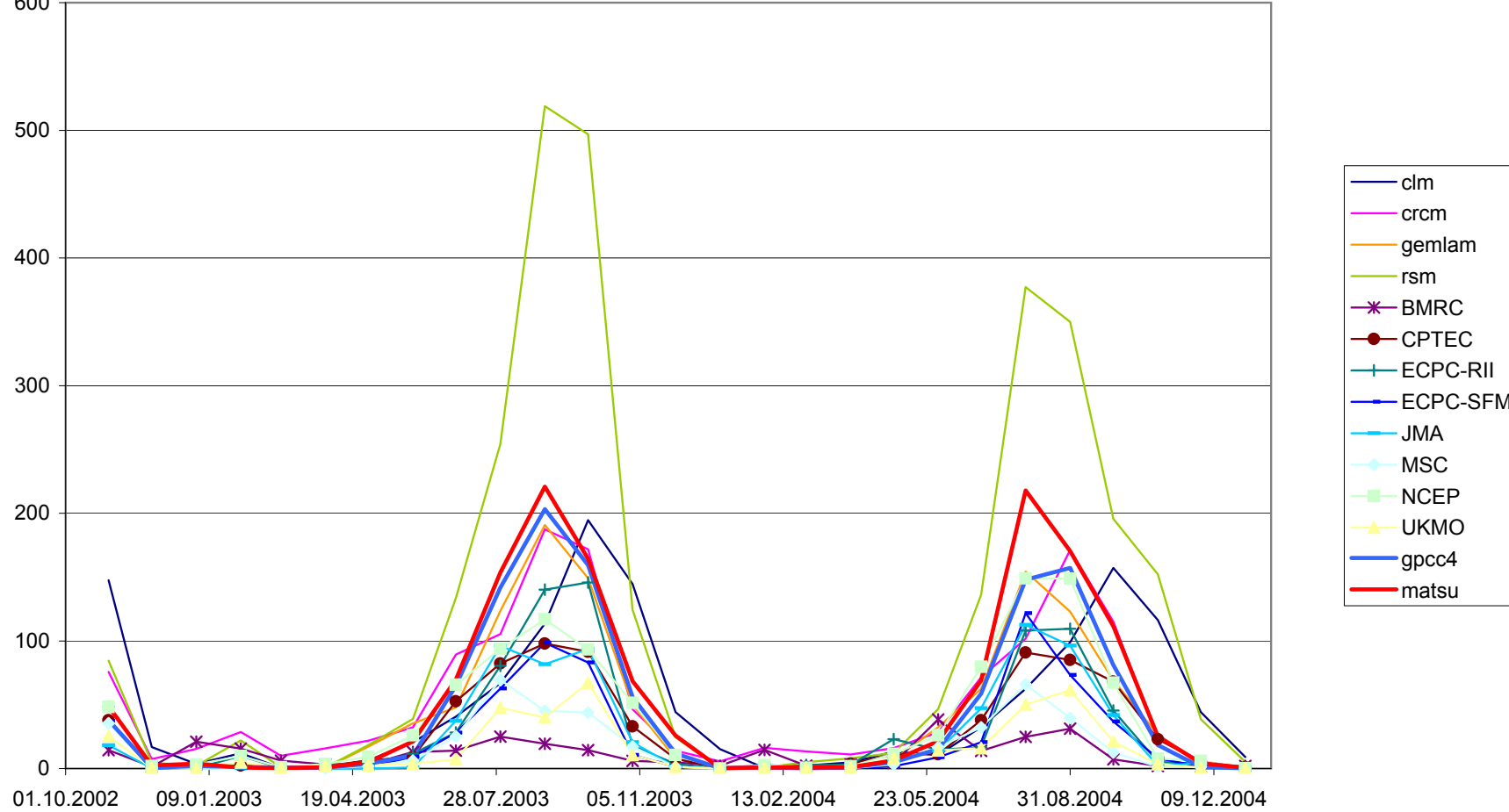


# Area mean monthly precipitation [mm] (2003/2004) CEOP

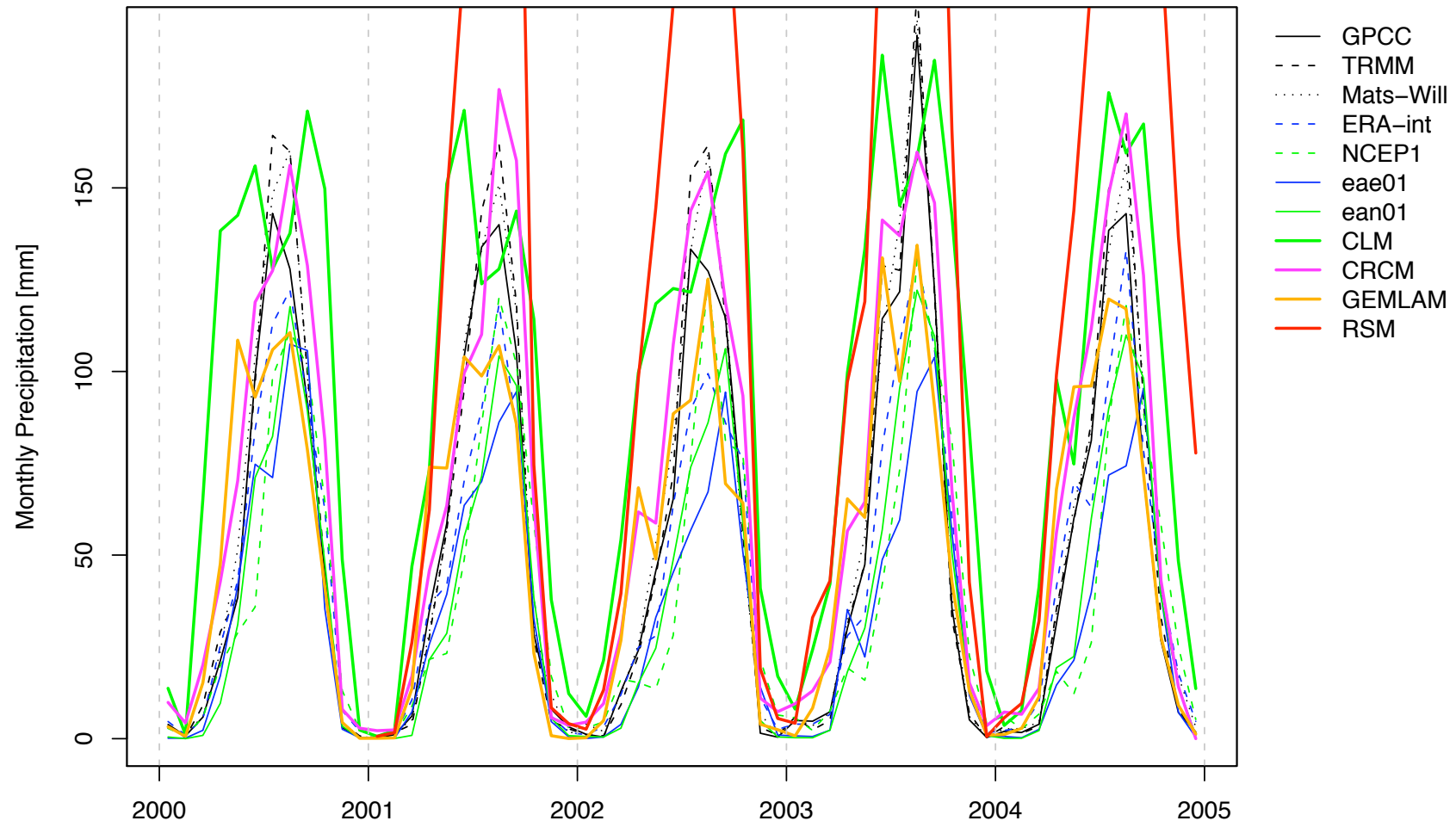
Niger



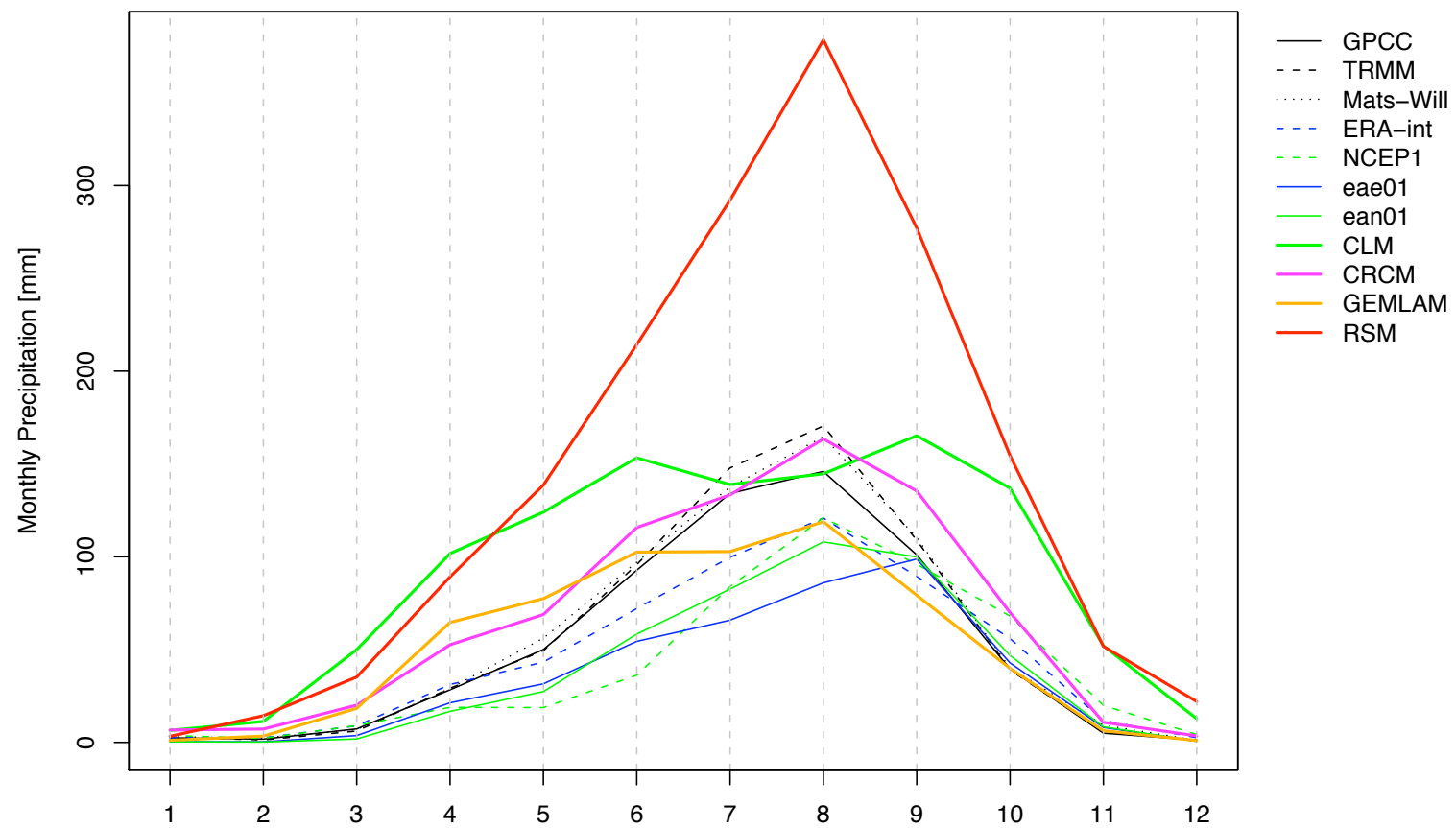
Senegal



# Niger area mean monthly precipitation [mm] (2000-2004) CEOP



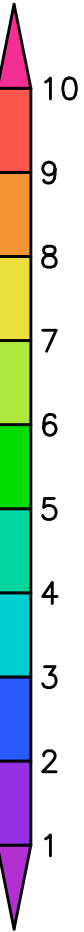
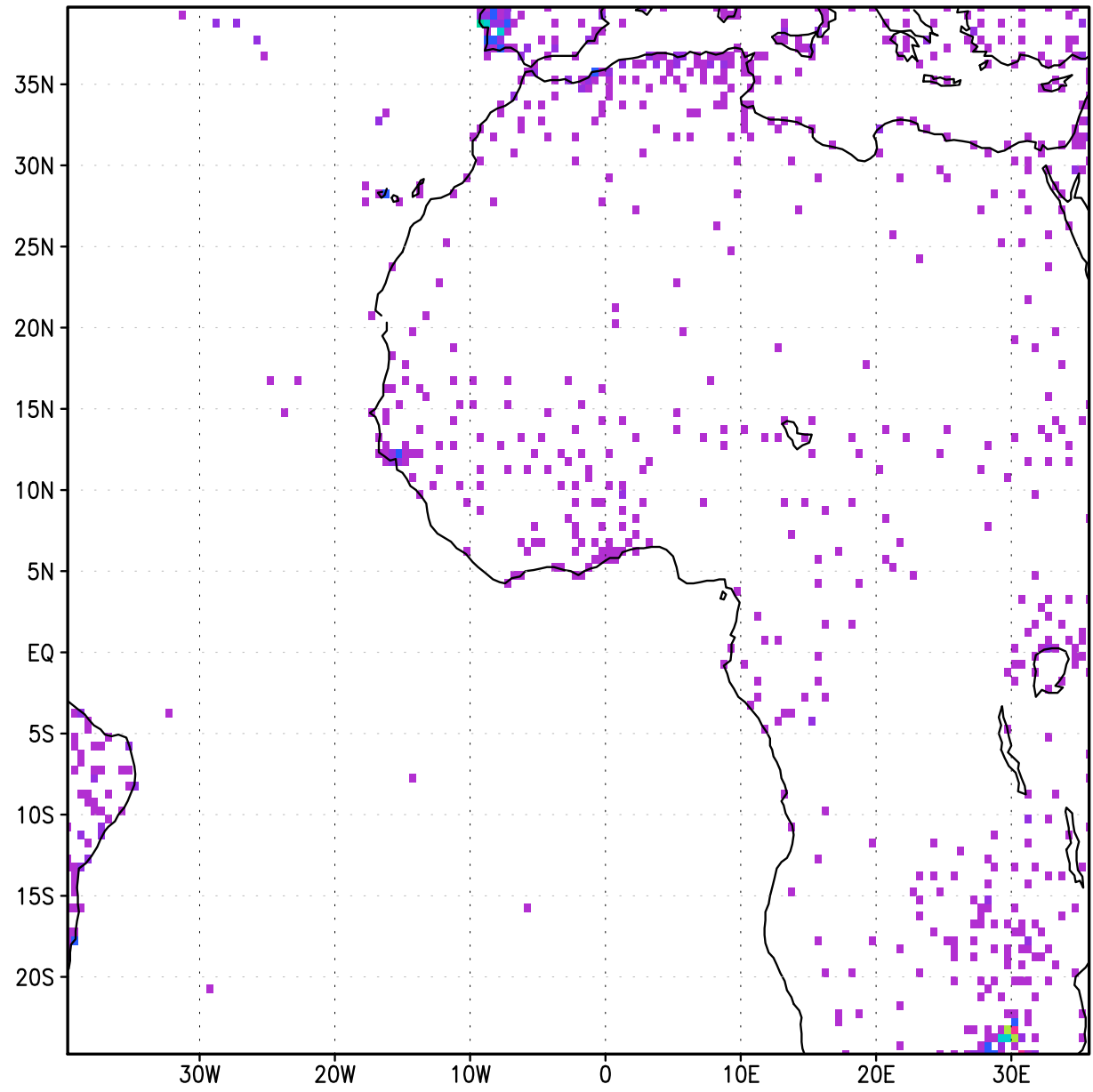
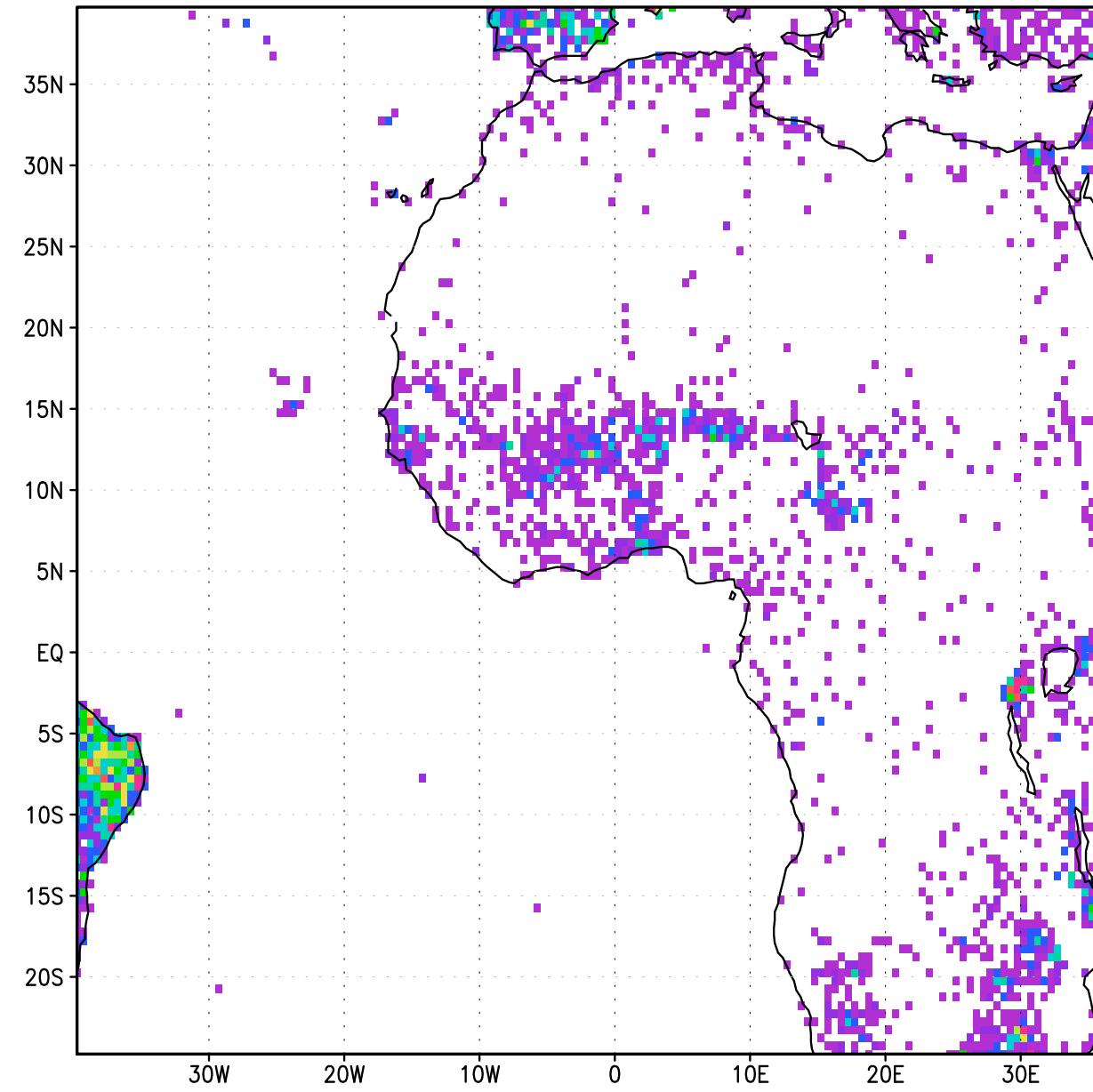
## Annual cycle



# GPCCv4 number of gauges

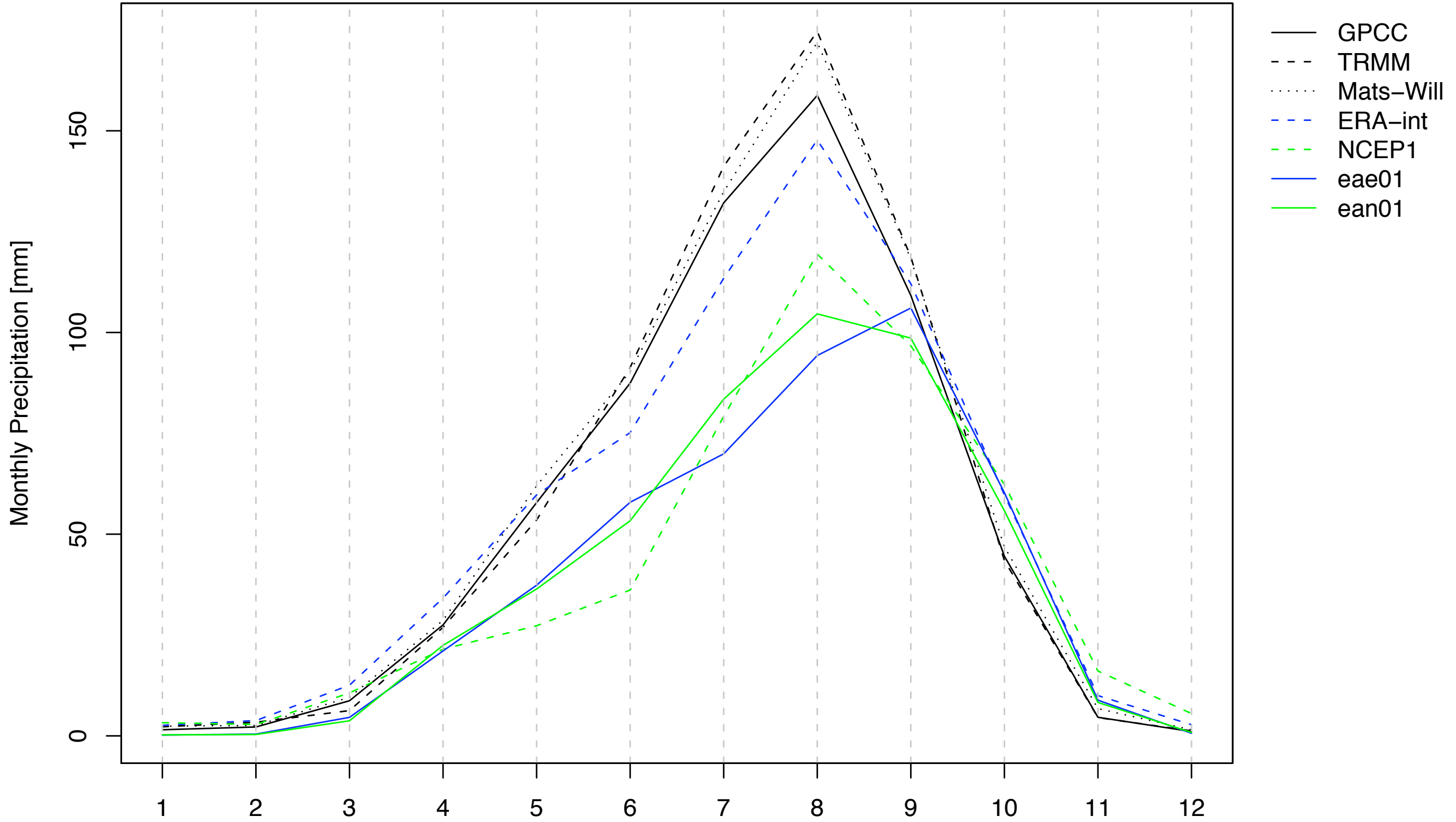
## GPCC number of gauges 1989

## GPCC number of gauges 2005



1989 - 2005

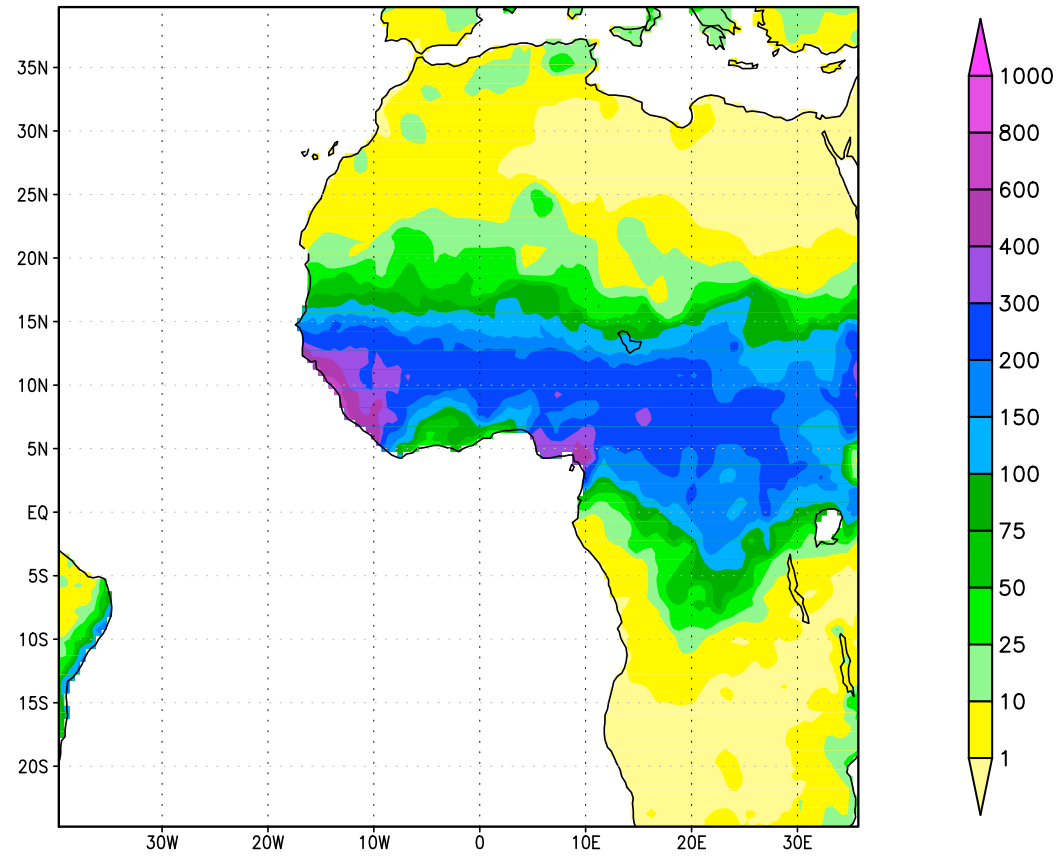
### Area averaged precipitation (niger)



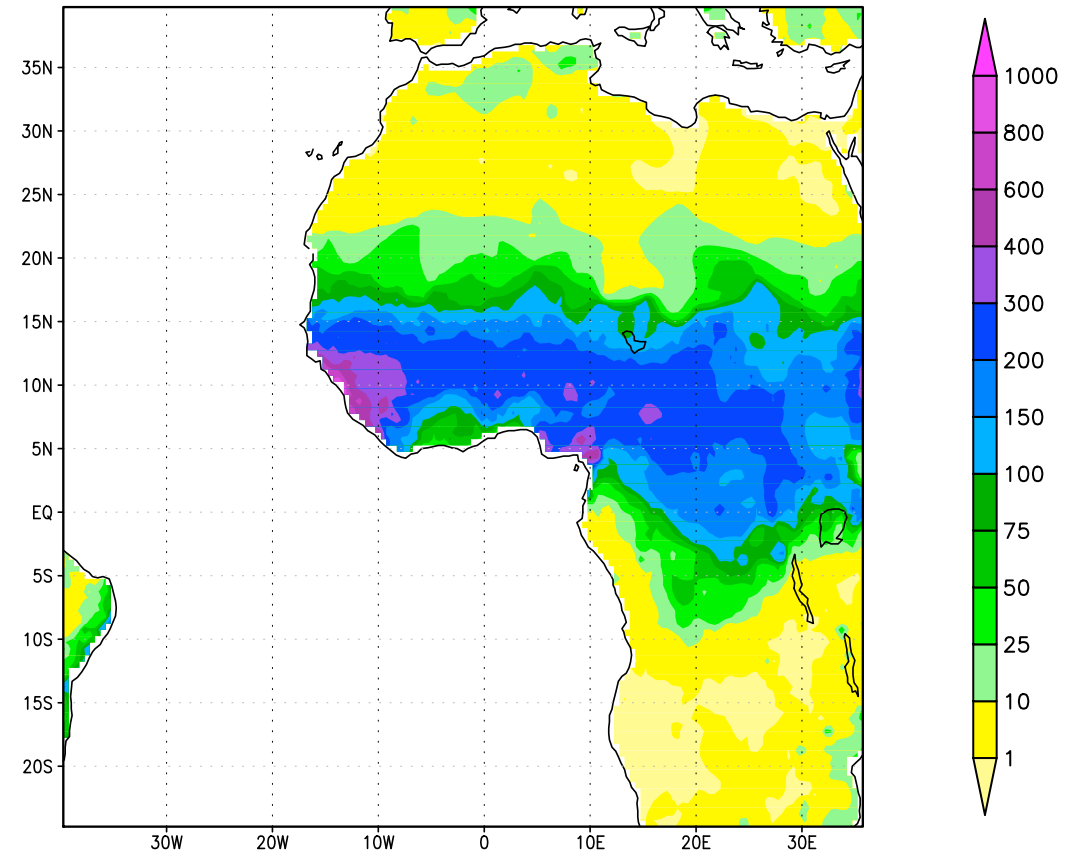


# Mean Precipitation in August

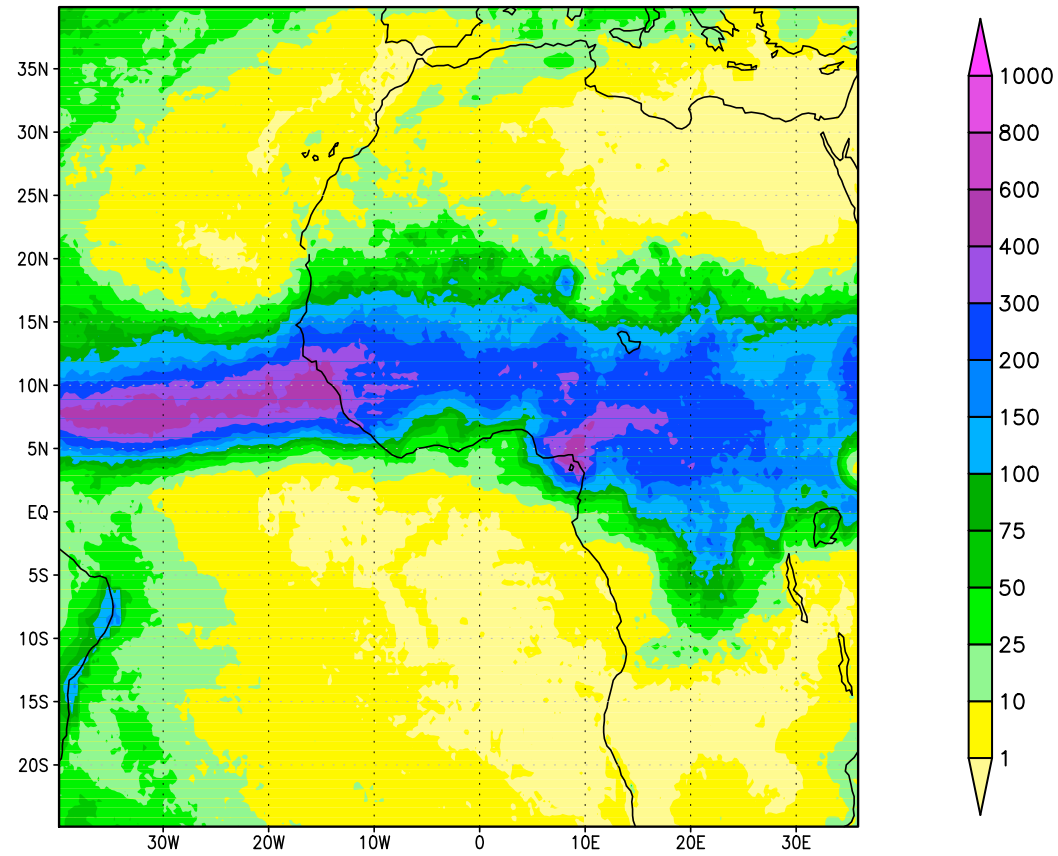
Precipitation [mm] August / GPCC



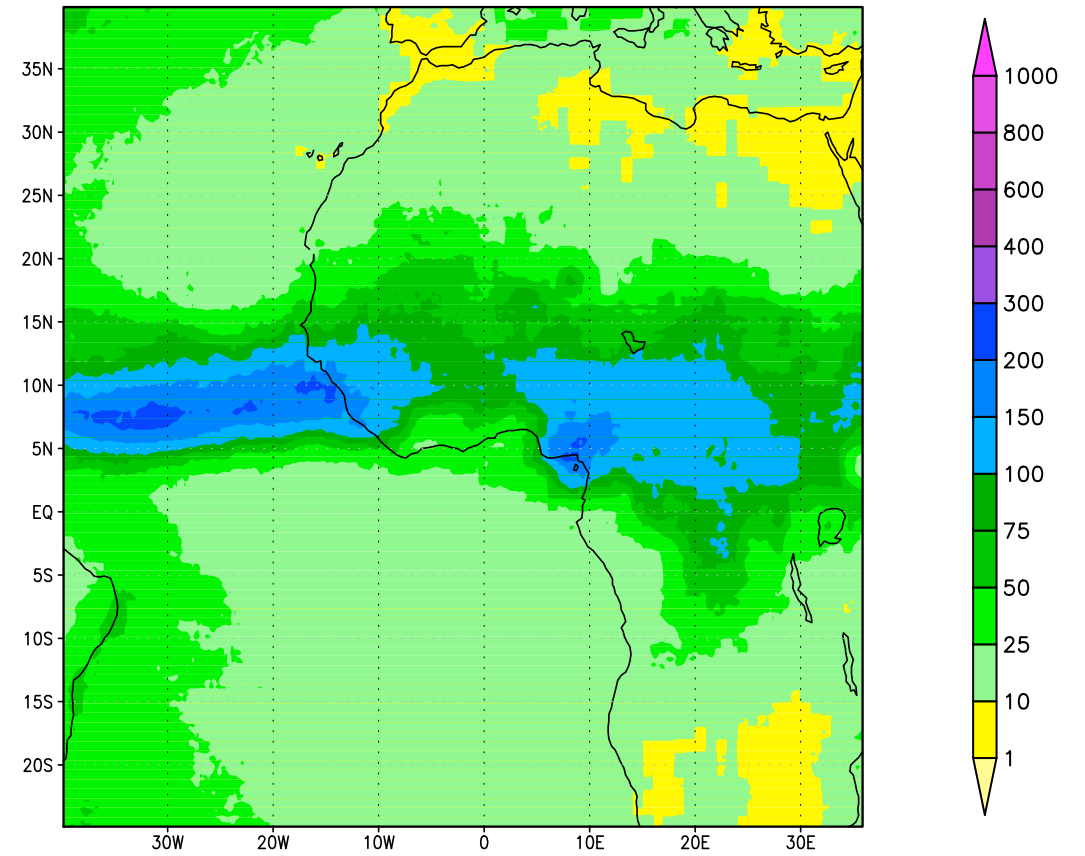
Precipitation [mm] August / Matsuura-Willmott



Precipitation [mm] August / TRMM

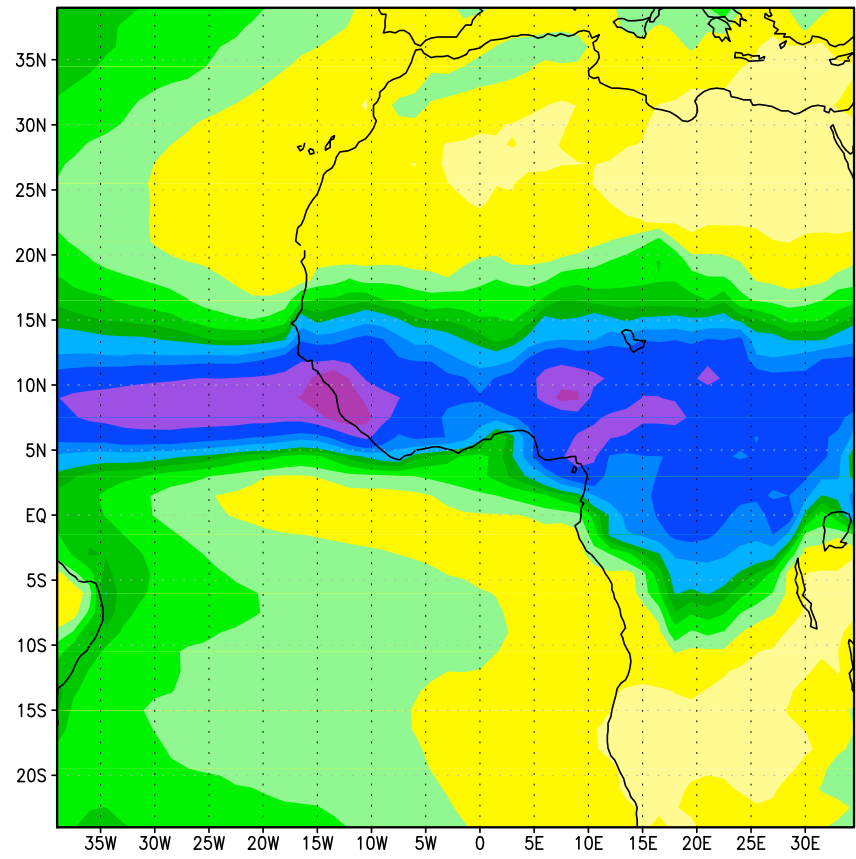


relative error in precipitation [mm] August / TRMM

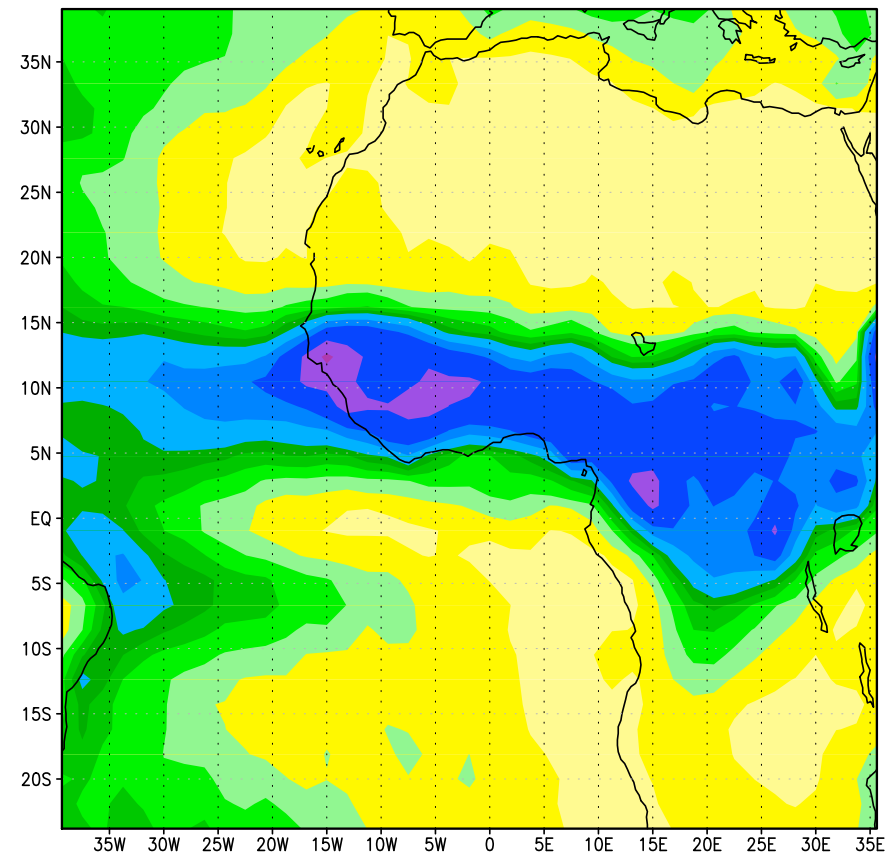


# Mean Precipitation in August

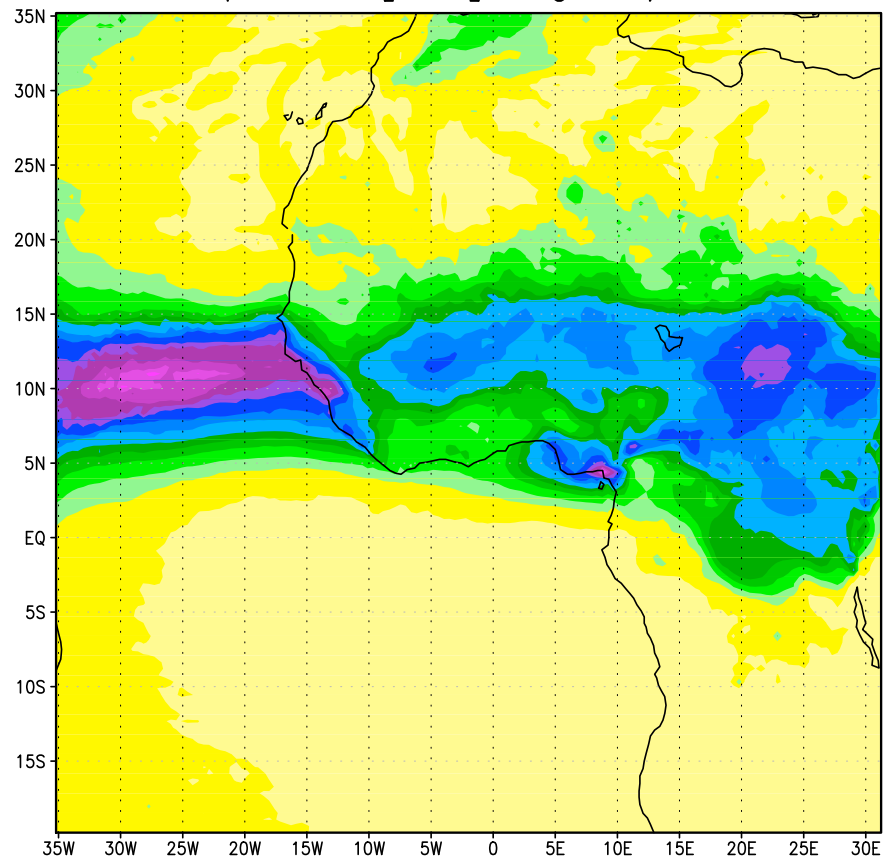
Precipitation [mm] August / ERA-interim



Precipitation [mm] August / NCEP1



Precipitation [mm] August / eae01



Precipitation [mm] August / ean01

